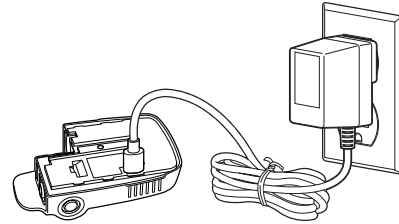


# Quick Reference Guide – Lasix® ONYU (lay-six on-yoo) (furosemide injection) 80 mg/2.67 mL, for subcutaneous use with Infusor

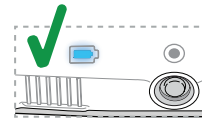
## Before You Start

- Do not start an infusion unless directed to do so by your healthcare provider.
- A healthcare provider should train you before using the Infusor by yourself.
- Start the infusion within 7 hours of preparing the Infusor.
- Do not use more than 1 Infusor at a time.
- Do not do more than 2 infusions in 24 hours.
- Be sure you are near a bathroom because you should urinate (pee) a lot during the infusion.

### 1 Charge Reusable Unit



- Always charge the Reusable Unit before using a new Disposable Unit (before each infusion).
- **Reusable Unit is charged if** you see a solid blue battery light:

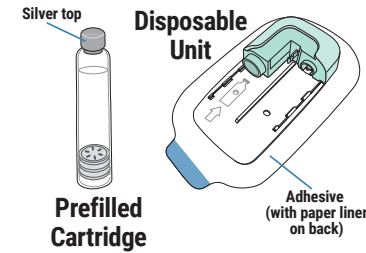


### 2 Check Expiration Date



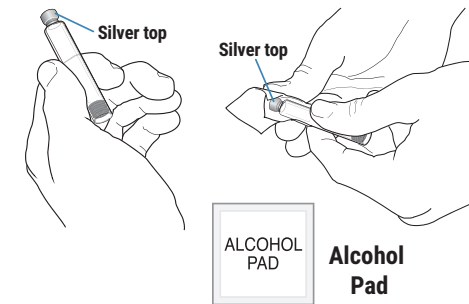
- **Wash hands** with soap and water.
- Check expiration date on the Lasix ONYU Kit.
- **Do not** use if expired.

### 3 Open Lasix ONYU Kit



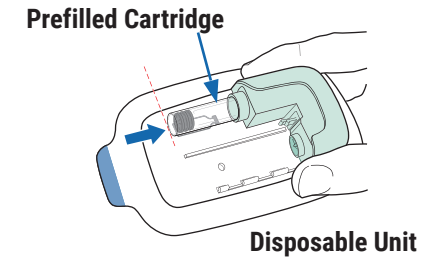
- Remove alcohol pads, Prefilled Cartridge, and Disposable Unit from the Lasix ONYU Kit.
- **Do not** remove the paper liner from the back of the Disposable Unit.
- **Do not** use if the Disposable Unit was dropped or if any parts appear to be broken. Use a new one.

### 4 Prepare Prefilled Cartridge



- Look at the Prefilled Cartridge.
- **Do not** use if the medicine looks cloudy, yellow-brown, or you see floating particles.
- Wipe the silver top of the Prefilled Cartridge with an alcohol pad.

### 5 Insert Prefilled Cartridge



- Push the Prefilled Cartridge into Disposable Unit with the silver top inserted first.
- When fully inserted, the bottom of the Prefilled Cartridge should be at the tip of arrow on the Disposable Unit.

## Warning

**Warning: Do not use insulin cartridges or other medicine cartridges in the Infusor.** Doing so could cause severe injury. Only use the Lasix ONYU Prefilled Cartridge with the Infusor.

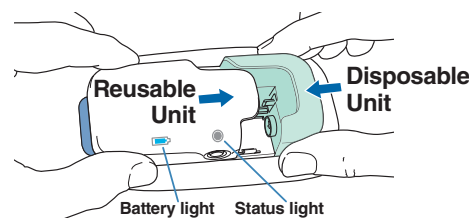
Use this space to record your healthcare provider's phone number.

Manufactured for **SQ Innovation, Inc.**  
 20 Burlington Mall Road, Suite 220  
 Burlington, MA 01803  
 1-855-452-7496 (1-855-4LASIX6)  
 www.Lasix-ONYU.com

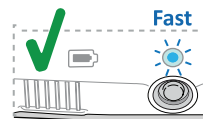


217537

### 6 Slide Together

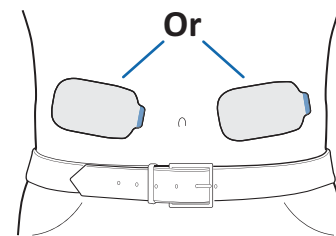


- Slide together until the Status Light on the Reusable Unit turns on.
- If Status Light is flashing red, go to Step 11 in the Instructions for Use.
- **Infusor is ready if** you see flashing blue light and hear the OK Tone (1 long beep):



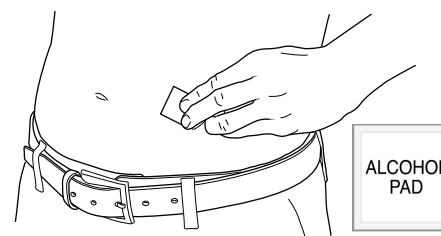
**OK Tone**  
(1 long beep)

### 7 Choose Site



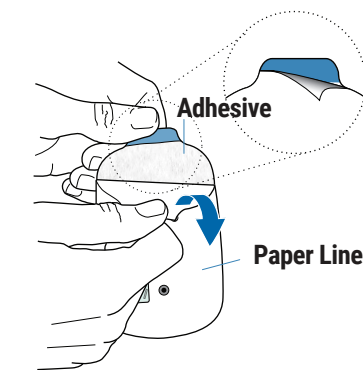
- Choose a stomach site above beltline, left **or** right of the belly button. Trim excessive hair.
- **Do not** choose a site with irritated, broken, wet, or folded skin.
- **Do not** wear clothing that may rub against or move the Infusor.

### 8 Wipe Skin



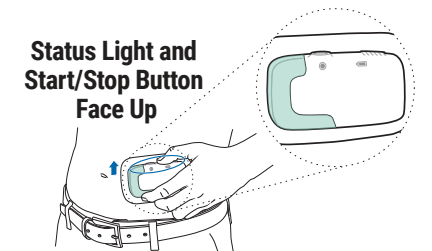
- Wipe the site with an alcohol pad.
- Let dry for at least 10 seconds.

### 9 Remove Paper Liner



- Peel paper liner off adhesive on back of Disposable Unit.
- Only remove the paper liner. Leave the sticky adhesive on the Infusor.
- **Do not** touch the sticky adhesive with your fingers.

### 10 Stick Infusor on Stomach

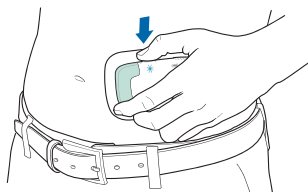


- Make sure the Status Light and Start/Stop Button are facing up in a horizontal position as shown, so you can see them when the Infusor is on your stomach.
- Rub the edges with a finger.
- **Do not** put the Infusor on your stomach if you can see the needle. Go to **Troubleshooting: You Can See the Needle** in the Instructions for Use.

Continue...

# Quick Reference Guide – Lasix® ONYU (lay-six on-yoo) (furosemide injection) 80 mg/2.67 mL, for subcutaneous use with Infusor

## 11 Start Infusor



- Press and hold the Start/Stop Button until you hear the motor and see the blue Status Light flashing.
- You may feel a slight pinch.
- If the Status Light is flashing red, go to **Troubleshooting: The Status Light is Flashing Red** in the Instructions for Use.
- Infusor started** if you see flashing blue light and hear the OK Tone (1 long beep):



OK Tone  
(1 long beep)

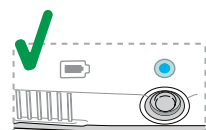
## 12 Wait 5 Hours



- Wait 5 hours for the Infusor to deliver the full infusion.
- You will **often hear the motor start and stop** during infusion.
- Do not** get the Infusor wet.
- Do not** remove the Infusor.

## 13 Check Status Light

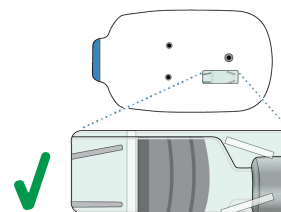
- After 5 hours, check the Status Light.
- If the Status Light is flashing red, go to **Troubleshooting: The Status Light is Flashing Red** in the Instructions for Use.
- Infusor is done** if you see solid blue light and hear the OK Tone (1 long beep):



OK Tone  
(1 long beep)

## 14 Confirm Infusion

- Remove Infusor** from stomach.
- Look in window** on back of Infusor.



If **gray** stopper is in the middle, all of the medicine was delivered.

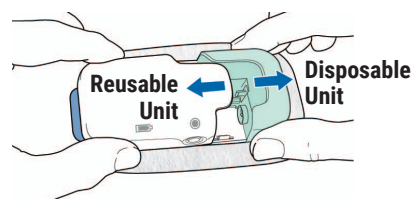
- X** If you see anything else, **call your healthcare provider right away.**
- X**

## 15 Confirm Medicine Worked



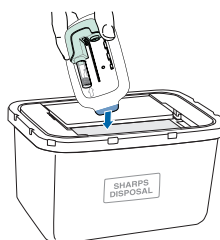
- If you urinate a lot (at least 2 times) during the infusion, the medicine worked.
- If you urinate less than 2 times, the medicine may not have worked. **Call your healthcare provider right away.**

## 16 Pull Apart and Clean



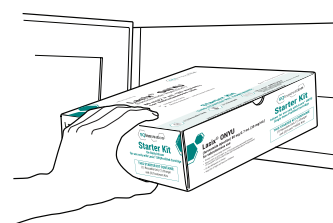
- Wipe the white Reusable Unit** with a clean, **water-damp cloth** to remove visible dirt. Let dry completely before storing.
- Do not** soak or spray the Reusable Unit with liquid.
- Do not** use cleaners with alcohol, bleach or other solvents. Mild detergents like dish soap are OK.

## 17 Throw Away Disposable Unit



- Throw away the Disposable Unit with the Prefilled Cartridge** into an FDA-cleared **sharps disposal container**. You should not throw away the Disposable Unit in household trash.
- Do not** use a Disposable Unit or Prefilled Cartridge more than 1 time.

## 18 Store Product

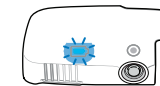


- Make sure the Reusable Unit is completely dry before storing.
- Store the Reusable Unit, Charger, and Lasix ONYU Kit boxes:
- At room temperature between 68°F and 77°F (20°C and 25°C).
  - Do not** refrigerate or freeze
  - Keep in a dark place to protect from light
  - Keep dry
  - Keep extra Prefilled Cartridges and Disposable Units in original package until it is time to use them.

## Troubleshooting

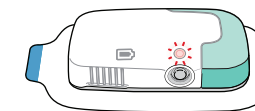
See **Chapter 3: Troubleshooting** for more information.

### Battery Light flashing blue



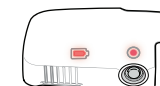
Battery is **still charging**.  
Wait until light is solid blue.

### Status Light flashing red and 2 short beeps



A **device or delivery error** occurred. Go to **Troubleshooting: The Status Light is Flashing Red** in the Instructions for Use.

### Both Lights solid red



Reusable Unit is **expired** and cannot be used. Go to **Troubleshooting: The Reusable Unit Has Expired** in the Instructions for Use.

If you can **see the needle**:

- Do not** touch the needle because you could get an injury.
- Go to **Troubleshooting: You can See the Needle** in the Instructions for Use.

If you need to **stop the Infusor early** before the 5-hour infusion is done:

- Do not** remove the Infusor from the stomach before stopping it. Press and hold the Start/Stop Button until the status light flashes red and you hear the Alarm Tone (2 short beeps). The Infusion has stopped and the needle has pulled in.
- Remove the Infusor from the stomach.
- Pull apart the white Reusable Unit and the green Disposable Unit.
- Throw away the Disposable Unit with the Prefilled Cartridge into an FDA-cleared sharps disposal container.
- Call your healthcare provider** because you did not get all of the drug.

See **Troubleshooting: Lights and Tones Table** in the Instructions for Use for additional troubleshooting help.